



Inside the Bulletin

Rabbi's Message	2	Tzedakah	10	Temple Library	15
President's Message	3	Women's Network	11	Our Temple Family	16
Passover Schedule	4	Chesed Team	11	Contributions	17
Youth and Family Education	6	Monthly Mitzvah & Family Table		Giving Opportunities	22
Education Director Message	7	Program	12	Fundraising	23
Membership Committee	8	Spiritual Life & Ritual Practice	13		
Inclusion Team	9	Book Group	14		



Message from the Rabbi

Wingmen, Loyalty & Love

In the Spring of my penultimate year at Rabbinical School, Paul, my best friend at the Seminary, offered me a weekend gig. He was part of the executive staff at Camp Ramah in the Berkshires and they needed someone to organize and plan a Shabbaton at the camp for a large group of 8th graders. The pay was significant and so too the responsibility; I had to hire all staff madrich/counselors and create the educational programming that

would take place from arrival on Friday afternoon through departure after brunch on Sunday. Oh, and also be ready with a rain plan. Without hesitation, I was all in.

The first night for kids in a bunk can be rough. They are so excited to be together, sleep is not a priority. We plan for this; counselors stay in the bunk and lead a Harga'ah - a quiet, "settle down" activity that takes about 45 minutes. Walking around, post-Harga'ah time, I saw a counselor sitting on his bunk porch being approached by one of the school chaperones. I went over to see what was going on. The man wanted to go into the bunk to talk to the kids. This was not a good idea and I gave the reasons why – they are quiet. It's already late. We need them to fall asleep or tomorrow will not only be a problem for them but also for the counselors who will have to go back in to settle them down again. The chaperone got angry. "Who the ef are you to say I can't go in to talk to my kids?" Taken aback by his anger and word choice I stood my ground. "Please, it's really not a good idea to go in. You can see them in the morning." With a huff he walked away. But the story isn't over.

Paul, who was Camp Director for the weekend, was also walking around. He went straight up to the parent chaperone. "I heard the way you spoke to a member of my staff. I know it's Shabbes, but if you do anything like that again I will personally open the gate to camp, tell you to get in your car and watch you leave." The man's face turned white. He apologized. The Shabbaton was a resounding though exhausting success – no rain! I was Program Director but things wouldn't have worked without Paul as my wingman. The foundation of our partnership then, and many times since, was always based on loyalty and love.

Purim and Pesach made this incident come to mind. In Persia, Melech Achashverosh decreed that all the Jews in his kingdom are to be killed. Even more, he tells Haman, "the money and the people are yours to do with as you see fit." Mordecai is beside himself but other than tear his clothes and put on sackcloth and ashes, what can he do? This is where Esther comes in. When she balks at helping, Mordecai makes his case. "Do not imagine that you, of all the Jews, will escape with your life by being in the king's palace. On the contrary, if you keep silent in this crisis, relief and deliverance will come to the Jews from another quarter while you and your father's house will perish. And who knows, perhaps you have attained to royal position for just such a crisis." From this point on Esther takes charge with Mordecai taking on the role as ever ready wingman. And then there's Moses. Initially, he too is reluctant to take charge. Only after receiving a staff of wood and finding out that Aaron, his older brother, would be his chief of staff, does Moses accept.

This is life. There are rough spots. We need wingmen; people with and for whom love and loyalty are unquestioned. People who will be honest with us, help us and show up for us, as we will for them. There are a lot of details to the Purim and Pesach stories. Don't leave out the power of partnership, of wingmen, loyalty and love.

Chad Sameach.
Rabbi B



President's Message

Dear Friends,

Purim has always had special meaning for Stacey and I and our membership at Congregation Beth Shalom of the Blue Hills. Some years back, we had been looking for a new congregation to join together. Stacey was still a member at the very small shul of her youth, and I was a member of a mega-shul in the Boston area. We were looking for our Golda-locks “just right” spiritual home.

When we found CBSBH, the congregation was wandering, not yet settled in its new home. (A fitting theme for Passover.) As we “shul shopped,” the first CBSBH event we attended was the Purim carnival at a community center. The mood in the hall was joyous, filled with the happy sounds of kids playing games. We were greeted with warm smiles and friendly introductions. And we met Rabbi B., decked out in full Purim regalia. Neither of us could imagine our rabbis in such a getup, fully engaged in the organized chaos of the carnival—and we both loved it. We were smitten by the warm welcome, the joy, the ruach of this community. We knew this was going to be the temple we raised our young son in.

I’ve had a lot of opportunities to meet new and prospective members these past seven months or so, most often at our family-friendly musical Shabbats. When I look around the sanctuary as David Wesson leads us in a spirited rendition of Shalom Aleichem, I’m reminded of the same ruach and the same warm welcome Stacey and I received on that first day. Our Membership Team does such a great job of helping bring people to us, but it’s our community that seals the deal when a new family or individual joins. In this season of Passover, it is wonderful to know that CBSBH embodies the Jewish value of welcoming the stranger—the new members among us—as we were once strangers in Egypt. The specialness of CBSBH is, as Stacey and I quickly found out, that in joining this community, you don’t remain a stranger for long.

Chag Sameach.

Steve Ostrovitz
Acting President



Congregation Beth Shalom of the Blue Hills

PASSOVER

2023—5783 Pesach Schedule

**Our Kosher Guide for Passover will be available on our website.
Please see the weekly email for the links**

NEW THIS YEAR: Passover Preparation Traditions

Everything you need to know about getting ready for Passover.

Available on our website. Please see the weekly email for the links

Tuesday April 4th

After Dark— Search for Leaven/Bidikat Chametz in your home

Wednesday April 5th

Erev Passover

Last Chance to return “Sale of Chametz” Form 9:30 AM—10:30 AM
Burning of Chametz/Bi’ur Chametz (bonfire in synagogue parking lot)
Pesach Candle Lighting—First Sedar 6:56 PM

Thursday April 6th

Passover Day 1

Pesach Services 10:00 AM
Candle Lighting / Second Seder 7:58 PM

Friday April 7th

Passover Day 2

Morning Services 10:00 AM
Shabbat Candle Lighting (no evening services) 6:58 PM

Saturday April 8th

Shabbat/Chol Hamoed Pesach Services

Congregation Beth Shalom of the Blue Hills

PASSOVER

2023—5783 Pesach Schedule



Tuesday April 11th

Erev Passover Day 7

Pesach Festival Candle Lighting (no evening services) 7:03 PM

Wednesday April 12th

Passover—Day 7

Pesach Festival Services 9:30 AM

Candle Lighting/Erev Passover Day 8
(no evening services) 8:05 PM

Thursday April 13th

Shabbat/Passover Day 8

Morning Services with Yizkor 9:30 AM

Havdallah/Chametz can be eaten 8:07 PM

Friday April 14th

Shabbat

Candle Lighting 7:06 PM



Religious School Important Dates

Sunday March 5th:

Purim Carnival

Tuesday March 7th:

Congregational Purim program

Friday March 17th:

Family friendly dinner & Musical Shabbat

Sunday March 19th:

A Cappella workshop with Kol Sasson

Sunday April 2nd:

Family Passover Activity Day

Sunday May 21st:

Religious School Family Siyum with David



Youth and Education

Our Jerome Weistrop Religious School is busy!

This is the first year since the start of the COVID-19 pandemic that we have been able to fully operate in person for classes as well as events.

Under the leadership of Cantor Lisa, and our wonderful teachers, the children are enjoying a rich and exciting curriculum. Our Madrichim are developing leadership skills and are a huge help during Religious School and at our events. In November, we dedicated a Religious School library where students can borrow Jewish books to read at home.

One of the goals this year is to unite the “Shul and School.” Therefore, many of our events are intergenerational. In October, we had a well-attended Simchat Torah celebration. Our Hanukkah celebration featured activities for the kids, and we shared a Latke lunch together. Some of our congregants brought in homemade sweet potato and lentil Latkes. Our kosher kitchen also prepared traditional potato Latkes with all the toppings.

Our first Student-led Shabbat was a huge success, and the monthly Friday night dinners and musical services with David Wesson continue to be a delight. Recently, we had an intergenerational Drum Circle led by Shira Moss. Todah Rabah to David Wesson, who is enriching our events with his wonderful music.

Upcoming events include our first Student-led Friday night musical service, a second Student-led Shabbat, and our annual Purim Carnival - this is a very important fundraiser for our Religious school. Cantor Lisa and the teachers work hard to make this a fun event open to the wider community; we always look for volunteers to help run the booths and sell raffle tickets.

Toda Raba to our Education Team members: Rob Milt, Jon Pincus, Myriah Kulin, Meredith Kaya, and Max Woolf; your dedication to our school and your advice are greatly appreciated.

The Education Team meets bi-monthly to discuss religious school-related matters and help plan upcoming events. We welcome new members; if you are interested in joining us, please email Shlomit at shlomit.hanz@gmail.com.

Lisa Sadler (VP of Education) and Shlomit Hanz-Gladstone (Team Chair).

What is a Kehillah Kedosha/קהלה קדושה/ Sacred Community?

While this is not one of the questions we ask directly during the Seder, you could try a family scavenger hunt through the Haggadah for hints as to the answer. Let us know what you discover!

It is clear, for instance, that the Hebrew slaves were not living in Sacred Community with Pharaoh and his task masters. But in Torah, there is always an “and”. In this case it would be that Pharaoh's daughter entered into Sacred Community with Miriam and Yocheved when she agreed that Moshe have Yocheved as a wetnurse. “Take this child *and* nurse it for me...so she (Yocheved) took the child *and* nursed it.” Exodus 2:9-10.

The Midrash reminds us that Miriam is the one to visit Moshe at the palace and to share the stories, songs, and history of their people. Moshe's adoptive mother, who is not named but whom we refer to as Batya/daughter of God, gives Moshe the lasting gift of a loving home. The nurturing of Yocheved gives Moshe a special bond that will eventually allow him to trust and welcome new leaders. Miriam gives Moshe an understanding of belonging and justice. Together these three women create a Sacred Community for a person who grows up to see this as possible for all of God's people.

This year the Rabbi Jerome Weistrop Religious School and Congregation Beth Shalom have been even more deeply engaging in building Sacred Community. As we share intergenerational events, nurture, learn, think creativity, and help one another reach our goals through Mitzvot, we bring the mission of the religious school to life as, “...an educational partnership between parents, students, staff *and* the wider synagogue community where we share a commitment to engendering a positive Jewish identity in both intellect *and* affect.” Martin Buber understood the “I *and* Thou” relationship to be a direct path to the Sacred. Let us walk it by learning in community together!

Cantor Lisa, Director of Religious School Education

Please contact Cantor Lisa at eddirector@bethshalombluehills.org if you have skills you would like to share or time to help out in small (but mighty!) ways. We welcome your participation or donations, and thank you for supporting the Rabbi Jerome Weistrop Religious School!



Cantor Lisa Kipen-Hershenson
Director of Religious School
Education



Did you know?

Nepal is home to the world's largest Passover Seder. The world's largest Passover seder, boasting more than 1,000 participants, is held yearly in Kathmandu, Nepal. Why Nepal?

The country is overflowing with young Israeli travelers who have recently finished their army service, and when it comes time for Passover, some want to be reminded of their mom's chicken soup or experience the familiar crunch of matzah. Other attendees simply hear of this massive event and feel compelled to travel to Nepal to experience the holiday in such a unique way. Rabbis fly in to lead the seder, and tens of participants show up in advance to help prepare for the guests

Membership Committee

We're happy to announce that Adina Schechter has joined our committee and has already been a wonderful addition, providing a wealth of information and enthusiasm to prospective members and brainstorming new ideas for ways to engage and connect.

Since our last report around the High Holy Days, our committee has remained very productive! We hosted an information table at Celebrate Milton with Rabbi B and had multiple people stop by expressing support for our synagogue. The kids and adults alike loved having their names written in Hebrew on name tags as well as getting to try out some shofars. It was especially fun and poignant to see many people walking around with name tags both in Hebrew and Arabic, which were offered at another table this year at Rabbi B's suggestion.

We also provided tours to 9 families during our two open houses that were coordinated with Religious School open houses. All were provided a ticket to one of our High Holiday services, and several of them have already come to additional services and/or activities. All have expressed interest in likely joining in the near future, and one family already has joined.

We've also reached out to quite a few of our congregants and have heard many say how much they appreciate still having multiple options and opportunities to participate in truly meaningful ways, both in person and over zoom or streaming.

Those of us who have attended in person again have had wonderful experiences reconnecting with our spiritual family. We encourage everyone to come back in person as soon as they feel comfortable doing so.

Please feel free to contact any one of us if you need some extra support to be a part of in-person activities again. We're happy to assist and we're looking forward to seeing you soon!

Emily Goldman, Co-Chair

617-290-6324

Eggoldman@comcast.net

Karen Friedman-Hanna, Co-Chair

617-953-7307

Kfhanna@rocketmail.com



The Inclusion Team

Hello from the Inclusion team, which is always full of energy and great ideas. This fall, we held a successful event at the synagogue with the showing of the movie Crip Camp on December 3. Approximately 18 congregants watched this movie about the origins of the disability rights movement at a summer camp for teens with disabilities, followed by a thoughtful discussion.

Inclusion continues to collaborate with the Beautification team on signage, most recently by ordering updated signs for all of our restrooms. These signs were purchased through a grant from the Ruderman foundation and will be installed in February. The wording will be similar to the laminated paper signs that are currently in use, but they will be a more permanent and attractive way to indicate that anybody in our synagogue building should feel free to use the restroom that they feel best fits their own gender identity. We also remain in contact with the Spiritual Life team regarding the need for additional large print siddurim, which they have purchased.

We will begin planning for two popular annual events in the spring, Juneteenth Shabbat and Pride Shabbat. If you are interested in helping to plan either of these events, please contact Deborah Ala at 617-435-0815 or dkohnala@gmail.com. Additionally, we may have an opportunity to request grant funding for an inclusion-related project, so if you have identified a need within our community, please reach out about that as well.

Lastly, if you are in the building and using your nametag, which everybody is encouraged to do, please consider adding a sticker with the pronouns you use to describe yourself. Stickers are available on the table with the nametags.

Thank you to the Inclusion Team for their commitment to making our congregation inclusive in many ways: Ada Rosmarin, Alan Rosmarin, Annette Koplovsky, Lindsay Rosenfeld, Ronit Voigt, Karen Friendman-Hanna, Pam Shrago, Jon Pincus, Michelle Sturdivant, Shelley Charnoff, and Francine Weistrop.

Deborah Ala, Chair

Did you know?

Congregation Beth Shalom of the Blue Hills was constructed on the grounds of Milton's first Jewish-owned property. Our synagogue was built in 2016, thanks to the generosity of Marvin and Andrea Gordon.

Bertha and Samuel Shoolman, Marvin's grandparents, came from war-torn Belarus with their eight children in 1920. Property owners in Milton refused to sell to Jews at the time. But, one of Shoolman's brothers, a real estate investor arranged for the Boston law firm Ropes & Gray to act as a straw bidder. The family ran a kosher dairy on the 10 acres for 29 years. Mr. Shoolman, in his horse-drawn wagon, would travel north, delivering chicken, eggs, and milk to Jews in Roxbury, Mattapan, Dorchester and along Blue Hill Avenue



Marvin Gordon with a photo of his grandparents

Team Opportunities

We would love for you to be on a TEAM or create a new one. It's a great way to meet new people and support our programming. We need your talents and expertise!

Contact Steve Ostrovitz via email at sostrovitz@ostrovitzlaw.com or contact the temple office at 617-696-4889 or via email at office@bethshalombuehills.org for information regarding any of our current teams.

Tzedakah

As of February 17, 2023, CBSBH members have contributed \$32,427.00 towards our \$65,000 annual fundraising goal. Thank you to all who have given so far!

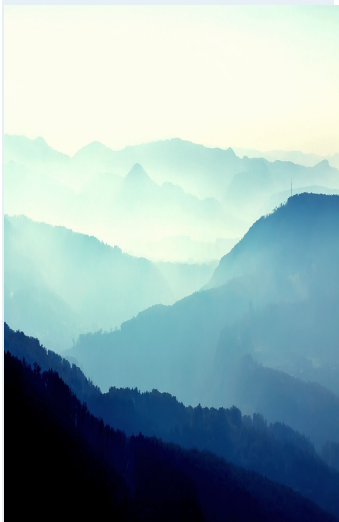
Tzedakah to the temple contributes 29% of the shul's operating budget. These donations subsidize the quality of our experience, bringing art, musical programming, and learning opportunities to our community. Operating funds ensure quality maintenance of our building and grounds, and support the Office team in running a smooth operation.

Every gift makes a difference in keeping our community vibrant and financially sustainable. Please make your donation by end of the fiscal year, May 31st.

How will you give to CBSBH this year?

- Make an online donation at CBSBH website through ShulCloud
- Mail check made out to CBSBH to the office
- Matching donation program through employer
- Schedule automatic payments to give over time
- Transfer appreciated stock
- For ages 70.5+, donate from annual required minimum distribution for tax advantages
- Designate CBSBH as a recipient in my estate plans
- Buy Scrip gift cards – get full value and the shul gets a percentage as donation!

Please contact team lead Jennifer Zaslow, jenzaslow@comcast.net with any questions or feedback.



The Women's Network



Women's Network, formerly known as Sisterhood, has already had a very exciting year.

In the fall, we had a luncheon and welcomed print-maker Stacy Friedman as our speaker. Stacy's moving artwork hung in the gallery during the High Holyday season.

Just recently, we had breakfast and then enjoyed Shira Moss and David Wesson leading an intergenerational drum circle.

Please join us on Friday March 18th for the Women's Network sponsored Shabbat Service.

In addition to such innovative programs, Women's Network does much behind the scenes. We provide gifts to our bar/bat/b'nei mitzvah students. We buy books for the library. We support the temple financially. And we make sure that there is a weekly kiddush and a fully functioning kitchen. We welcome you to join Women's Network, which is open to everyone. Annual dues are \$18.00 for existing life members and \$36.00 for annual members. Please contact our co-presidents, Arlene Klotz or Janet Petkun, if you have any questions.

Chesed Team

The Chesed Team (Deeds for Loving Kindness) is here to support all of our congregants and community in many ways.

Our Deeds of Lovingkindness Team is ready, willing, and able to support any congregant with a need. We acknowledge life-cycle events, provide meals, run errands, pick up prescriptions, and provide transportation. If there is anything you need: technology support, a Siddur (prayer book) or Humash (Torah book), tallis.

Thanks to CJP, emergency financial assistance is available from Rabbi Benjamin's Discretionary Account.

Getting assistance from the Chesed Team is easy. We always find someone to help when needed. Contact the office at 617-698-3394 or Janet Petkun at jspetkun@yahoo.com. Janet, the Rosh, will. Once you let us know, we will have someone who can help get in touch.

We do not have regular meetings, so if you are interested in joining the Chesed Team, please get in touch with Janet.

Janet Petkun, Chair

What is Chesed

In the Jewish tradition, kindness is expressed with the Hebrew word *chesed* (beginning with a "ch" sound, as heard in the name "Bach," and rhyming with "bless-ed"). *Chesed*, like many Hebrew words, does not translate precisely into English. The word means more than simply "kindness." Often translated as "loving-kindness," *chesed* means giving oneself entirely, with love and compassion. The concept of *chesed* appears in the Torah more than 190 times.

Many Jewish thinkers hold the value of loving-kindness up as Judaism's primary ethical virtue. Jewish scholar Avivah Zornberg said *chesed* is "not just loving-kindness, but is also courage and imagination."

Judaism teaches us to lift each day and make it memorable. With acts of *chesed*, we do





Monthly Mitzvah Program & Family Table Program

While the pandemic is by no means over, we were able to conduct a regular schedule for the Monthly Mitzvah and Family Table programs this past fall and early winter.



In terms of the Monthly Mitzvah, as we've done in the past, we collected a large amount of winter clothing for adults and children and delivered them in November to Interfaith Social Services. In December, we prepared 50 to 100 lunch bags for Father Bill's in Quincy, and as of this writing are preparing another 50 to be donated to the Brockton facility. Since I'm out of town (in FL), we're

extremely fortunate to have chef Lauren Brennan lead us in the January preparation, and Ken Pariser brings the lunch bags to Father Bill's in Brockton. There is no Mitzvah event scheduled for February, but we plan to conduct our annual challah preparation on Mar 12. In April, we'll partner with North Quincy High School on the collection and donation of prom dresses and men's formal wear. In May, we'll focus on a summer clothes drive with Interfaith Social Services, and we'll conduct our fourth blood drive on June 29.



The Family Table program has been on schedule. To address members' preferences for different methods of donating food, we've provided the opportunity for alternative contributions - sending checks, purchasing gift cards, and having food delivered to the shul or directly to the JF&CS Family Table offices in Waltham. This year we changed how members are asked to donate - we went to an alphabetical system according to the first letter of the last name. As always, we've achieved our monthly goals (25 beans, 25 fruit) since October. We've been extremely fortunate to have two members volunteer to deliver our donation while I'm in FL between January-March. Many thanks to Seth Meyer and Cheryl Hixon! Family Table will resume a normal routine after I return from FL in April.



In summary, despite the pandemic, we've been able to maintain our commitment to community service - thanks for your generosity!



Jack Levy
Coordinator -Mitzvah and Family Table Programs

Spiritual Life and Ritual Practice Team

The Spiritual Life & Ritual Practices Team completed a review of the High Holiday services of last fall. While the vast majority of attendees were pleased with the services, recommendations were provided designed to enhance the experience. We will begin our preparations for Rosh Hashanah and Yom Kippur 5784 in late Spring.

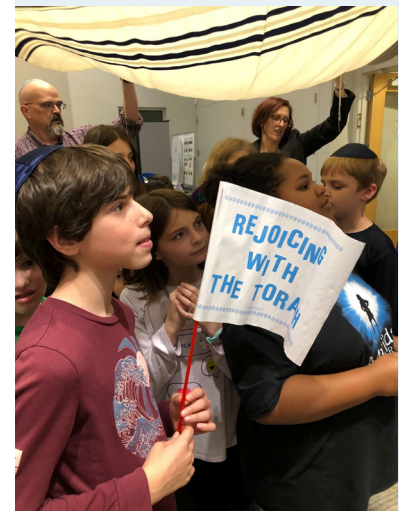
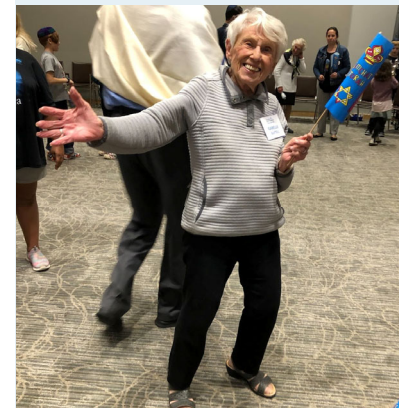
The SL&RP Team was asked to offer thoughts to the Beautification Team regarding new Torah covers. The Team has done so and the Beautification Team will now proceed with the project.

We have ordered additional large print Sim Shalom Shabbat siddurim, and we are looking into the availability of large print editions of the Eit Ratzon Shabbat siddurim.

Finally, the Team has coordinated the effort to lead services on those few occasions that the Rabbi is unavailable.

Best wishes for the coming Purim and Pesach holidays!

Steve Jacobs for the Team—David Ehrmann, Jay Balaban, Barbara Adele Fritz-Elliott, Harriet Goldstein, George Goldstein, Lee-Anne Jacobs, Pam Shrago, Lila Rosenbaum, Francine Weistrop, Annette Koplovsky, Lil Konowitz, Alan Rosmarin, Rabbi Benjamin.



Why are Jews called the people of the book?

The Jewish people have been known as the people of the Book since time immemorial. But the word originated in Islam, which categorized Jews as "people of the book" - meaning those with an earlier revelation from God that was written down.

The phrase most commonly refers to the Jews' intimate relationship with the Torah, the Tanach, and works such as the Talmud, commentaries, and codes of Jewish law. From the Torah scroll, painstakingly written on parchment, to the printed Talmud; Judaism reveres the written word. When the printing press was invented in the 1500s, Jews were among the first to use it, and the Bible, Talmud, and prayer book (siddur) became standard Hebrew printed publications.

Books have long held a special place in the hearts and minds of Jews. Harry Wolfson, the first chairman of a Jewish Studies Center in the US and a Harvard professor and historian in the early 20th century, was once confronted by a colleague who said, "Why do you Jews think you are so special?" Wolfson said, "As far as I know, we are the only people who pick up and kiss a book when we drop it on the floor."

Temple Office Staff



A special thank you to our wonderful office staff. The walls of our synagogue would be weakened without their presence and hard work. Thank you to Candice Privott, Harriet Pollard and Arlene Klotz for standing strong.

Book Group

Jews have been called many things, but one of the very best is "people of the book".



Haggadah shel Pesah, 1726

At our congregation we celebrate that title with our amazing library and our monthly book discussion group. Our book choices range from old classics to very recent publications. We have read lots of historical fiction, learning about Jews in every period, from biblical times to the most current. We've read

biographies of important Jews from the Rothschilds to Golda Meyer.

This year we will read our first "graphic novel", with the biography of Congressman Barney Frank. We've read first time authors, Nobel Prize winning authors. We've read about Israel. We've read about the Shoah, the Inquisition, Jews in other lands, the immigrant experience, philosophers and kings. All our choices have a Jewish component and yet are of universal interest. Our books can be in hard copy, e books, audio format, and even large print. We are grateful to the Milton Public Library for its help in locating our choices in libraries throughout the Commonwealth.

So, if you like to read, have time for the book of each month, join our group. We meet on Zoom on the third Wednesday of each month. Come read with us.

Francine Weistrop

Temple Library

Everyone reading this has most likely seen and been in our beautiful sanctuary. But many of you do not know that



there is a smaller gem on the second floor, the amazing temple library. Its design is simple, beautiful, and peaceful. It is a lovely setting, a small but ample-sized room with shelves filled with books on all Jewish subjects.

The library team noticed that some of the books were dated and that the collection took up all the space, leaving a need to make room for new books. They spent several meetings looking at each book, making a sometimes painful decision to discard many. The bonus part is that there is now room to add new books to the collection.



If you find yourself with a few minutes as you wait for your child at Religious School or an appointment or want a quiet oasis to raise your spirit, the library is the ideal place to be. Just sit and look around. Pick up some of the books to become familiar with the collection. Choose a book and read some of it. Sign it out and take it home to enjoy.

All of that is waiting for you. Please stop by and enjoy another offering that our synagogue has for you.



Library Team: Pam Shrago, Lila Rosenbaum, Francine Weistrop, Shelley Charnoff and Abby Rosenberg





Mazel Tov to **John & Francie Richardson Ellement, Cheryl & Matthew Zamaloff** and their families on the B'nei Mitzvah of their children, **Scarlett Richardson Ellement** and **Luke Zamaloff**.

Best Wishes to those celebrating Special Birthdays, **Annette Koplovsky**, and to **Irene Davis**, celebrating 100 years.

Congratulations on the birth of your Grandson, Brandon Tyler Rochester to **Ronit Voigt** and family and parents **Emily Voigt** and **Mike Rochester**.

to **Janet Petkun**, our 2022 Thanks for Giving Honoree.

to **Francine Weistrop** on her Great-grandson Koby Ruben's B'nai Mitzvah.

to **Karen & Bill Hanna** on their Son, **Adam's** wedding to **Kaily**.

Get Well Wishes **Annette Koplovsky, Lakie Shrago, Lee-Anne Jacobs, Barbara Adele Fritz-Elliott, David Ehrmann** and **JoAnn Rothschild**.

Sincere Condolences to The Family of Bebe Rosenstein on the passing of **Bebe Rosenstein**;

to the Karon Laredo Family on the passing of **Gerald Karon**;

to the Rosmarin family on the passing of Ada's beloved Mother, **Millie Pollock**;

to Ellen Berlin on the passing of her beloved Aunt, **Shelly Weisman**;

to Dr. David Litvak and family on the passing of his Mother, **Kathy Litvak**.

May their memories be for a blessing.

Please keep us informed of any event in your lives that we can share with our Temple Family. Call the Temple office at (617)698-3394.

Contributions—General Fund

IN MEMORY

To honor the Memory of your beloved Mother,

Ruth Greenspan

To: Beth Greenspan

From: Lee Ann Jacobs
Mary Lou Fishman
Marybeth Curran

To honor the memory of your beloved Mother,
Mother-in-law & Grandmother, **Ruth Greenspan**

To: Miriam & Phil Greenspan

From: Lee Ann Jacobs

To honor the memory of your beloved Mother,
Mother-in-law & Grandmother, **Ruth Greenspan**

To: The Greenspan Family

From: John & Mary Pasciucco

To honor the memory of your beloved Son and
Brother, **Adam Cooperstein**

To: The Cooperstein Family

From: Judge Robert Baylor & Deborah Felton

To honor the memory of **Gerald Karon**, beloved
Husband, Father and Grandfather

To: The Karon Laredo Family

From: Lila Rosenbaum

To honor the memory of **Millie Pollock**, beloved
Mother, Mother-in-law, Grandmother and Great-
grandmother.

To: Ada Rosmarin & Family

From: Arlene & Mel Klotz
Ruth Gershman
Deborah Felton & Judge Robert Baylor
Francine Weistrop
Paul & Sue Etkind
Lakie & Pam Shrago
Daniel Gallery
Susan Dolan & Brian Scheff

To honor the memory of your beloved
Aunt **Shelly Weisman**

To: Ellen Berlin

From: Paul Cooperstein & Maria Merloni

To honor the memory of **Bebe Rosenstein**, beloved
Mother, Mother-in-law and Grandmother

To: The Family of Bebe Rosenstein

From: Janet Abrahamson
Arlene Cohen – Classmate of Beth Israel
Hosp. Nursing School
Sherry Cappola
Andrea Cymbalista & Jeffrey Cohen
Rachelle Dubow
Anna May (Cohen) Eisenberg- Classmate of
Beth Israel Hosp. Nursing School
Ruth Gershman
Arlene & Mel Klotz
Mr. and Mrs. Gerald Rubin
Irwin & Sara Tauben
Harvey Mamon
Cynthia Wyatt
Janet Petkun
Paul Cooperstein & Maria Merloni
Melissa Tearney
Barry Rosenblum
Julia Hesse
Mitchell H. Cohen
Gerald Rubin
Leah & Pam Shrago
Debra Sherman & Christopher Zirps
Doris Peters
Alan & Faye Rosenstein
Marcia & Paul Rymaszewski
Joyce Gerber
Francine Weistrop

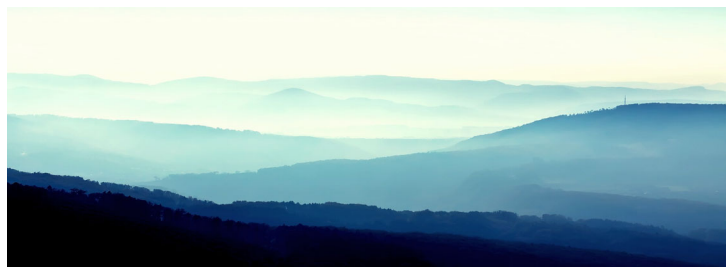
HAPPY BIRTHDAY

Happy Birthday to **Irene Davis** celebrating
“100”, Mazel Tov!

From: Ruth Gershman

Happy Birthday to **Pam Shrago**

From: Francine Weistrop



GET WELL

Wishing you a full and speedy recovery

To: **Annette Koplovsky**
From: Pam & Lakie Shrago
Francine Weistrop

Get Well Wishes

To: **Lakie Shrago**
From: Francine Weistrop

Get Well Wishes

To: **Lee-Anne Jacobs**
From: Francine Weistrop
Arlene Klotz
Lila Rosenbaum

Get Well Wishes

To: **Barbara Adele Fritz-Elliott**
From: Francine Weistrop

Full & Speedy Recovery Wishes

To: **Lee-Anne Jacobs**
From: Arlene & Mel Klotz

Get Well Wishes

To: **David Ehrmann**
From: Francine Weistrop

To: **Jo Ann Rothschild**
From: Francine Weistrop

To: **Annette Koplovsky**
From: Francine Weistrop

To: **Betsy Buchbinder**
From: Francine Weistrop

IN HONOR

In honor of **Scarlett** becoming a B'nei Mitzvah

From: Arlene & Mel Klotz
Lee-Anne Jacobs
Paul Cooperstein & Maria Merloni

In honor of **Luke** becoming a Bar Mitzvah

From: Paul Cooperstein & Maria Merloni

In honor of the birth of your Grandson, **Brandon**

To: Ronit Voigt & Family
From: Paul Cooperstein & Maria Merloni
Francine Weistrop
Lee-Anne Jacobs

IN APPRECIATION:

For the beautiful High Holiday Services

To: **Cantor Robbie Solomon**
From: Judge Robert Baylor & Deborah Felton

In honor of your beautiful singing during Yom Kippur

To: **El Goldman**
From: Judge Robert Baylor & Deborah Felton

In honor of your son's engagement – Mazel Tov

To: **Dr. & Mrs. Aaron Siegal**
From: Betty Gluck

Contributions: The Chesed/Mitzvah Fund

In Honor of **Janet Petkun**, our 2022 Thanks For Giving Honoree

From: Barbara Adele Fritz-Elliott
Arlene & Mel Klotz
Harriet Pollard
Lakie & Pam Shrago
Ruth Gershman
Lila Rosenbaum
Rona & Harold Goodman
Judge Robert Baylor & Deborah Felton

To Honor the memory of **Millie Pollock**, beloved Mother, Mother-in-law, Grandmother & Great-grandmother

To: Ada Rosmarin & Family
From: Martin Plovnick



Contributions: Sponsor a Kiddush

In honor of **Gladys Petkun** who is Celebrating a birthday

By: Janet Petkun

In honor of **Aboni Pollack**

By: Mildred Pollack

In memory of her Husband **Louis Elliot**

By: Barbara Adele Fritz Elliot

In Memory of her Brother **Sidney Rosenberg**

By: Gladys Petkun

In honor of his 50th Bar Mitzvah Anniversary

By: Rabbi Benjamin

In honor of **Arlene, Candice and Harriet** for all you do

By: Barbara Adele Fritz Elliot

In memory of **Frank and Hilda Rosenberg**

By: Gladys Petkun

In memory of her Dad **William Slepikoff**

By: Francine Weistrop

Mazel tov to **Emily & Mike**

By: Ronit Voigt

In memory of her Mom **Ruth Ann Fritz**

By: Barbara Adele Fritz Elliot

In memory of her Aunt/Uncle **Alice & David Resnick**

By: Barbara Adele Fritz Elliot

In memory of her Father-in-law **Edward Peters** & her son **Edward Jay Peters**

By: Doris Peters

In memory of her Aunt/Uncle **Alice & David Resnick**

By: Barbara Adele Fritz Elliot

In memory of her Brother **Melvin Rosenberg**

By: Gladys Petkun

Contributions: Rosenbaum Fund

Happy Birthday **Gladys Petkun**

From: Lila Rosenbaum

Happy Anniversary **Karen & Bill Hanna**

From: Lila Rosenbaum

Mazel Tov on your Great-Grandson becoming a B'nai Mitzvah

To: **Francine Weistrop**

From: Lila Rosenbaum

In Memory of your beloved Mother, Mother-in-law, Grandmother & Great-grandmother

Millie Pollock

To: **Ada Rosemarin & Family**

From: Lila Rosenbaum

In Memory of your beloved Mother, Mother-in-law & Grandmother, **Kathy Litvak**

To: **Dr. David Litvak & Family**

From: Lila Rosenbaum

With love and gratitude for your full recovery.

To: **Charles Feldberg**

From: Lila Rosenbaum

Wishing you happiness in your lives together

To: **Emily Voigt & Mike Rochester**

From: Lila Rosenbaum

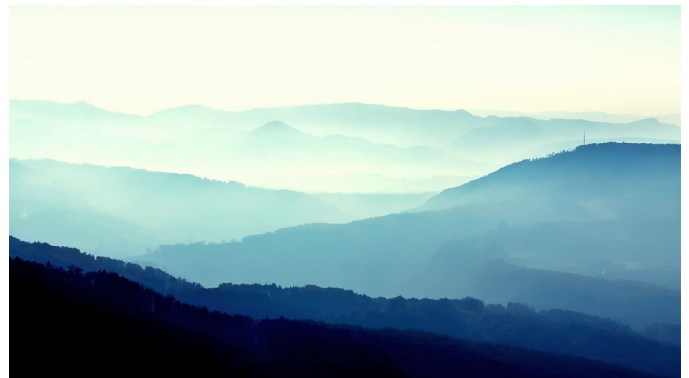
Happy "100"th Birthday Wishes

To: **Irene Davis**

From: Lila Rosenbaum

Donation from **Drs. Susan & David Rosenbaum**

Donation from **Rob Milt & Stephanie Loranger**



Contributions: Annual Campaign (Tzedakah)

Deborah Ala
Emily Bargar
Deborah Felton & Judge Robert Baylor
Stacey Bloom & Steve Ostrovitz
Paul Cooperstein
Frank David & Julie Lin
Irene Davis- In memory of her beloved husband
Milton Davis
David & Barbara Ehrmann
June Elam- Mooers
Toby Friedman
Barbara Adele Fritz-Elliott—**To: Paul Cooperstein & Family.** To honor the memory of your beloved Son and Brother, **Adam Cooperstein**
Ruth Gershman
Adam & Shlomit Gladstone
Emily Goldman
George & Harriet Goldstein
Andrea Gordon- **To: Paul Cooperstein & Family,** To honor the memory of your beloved Son and Brother, **Adam Cooperstein**
S. Sidney Grossman
Bill & Karen Friedman- Hanna
Neil Heiger & Elizabeth Matlin – In honor of **Jacob's** Start at Brandeis
Lee Anne Jacobs
Steve & Helen Jacobs
Adele Katzoff – In memory of **George Katzoff**
Meredith & Seli Kaya
Amy Klotz and David Terry
Mel & Arlene Klotz -**To: Paul Cooperstein & Family,** To honor the memory of your beloved Son and Brother, **Adam Cooperstein**
Andres Lessing & Lindsay Rosenfeld
Jack Levy
David Mabel—In memory of **Lucielle Mabel**
Natasha & Steven Minsky
Nancy & Al Mollitor

Marilyn & Bill Monderer
Kenneth Pariser
Gladys Petkun
Janet Petkun- In honor of her Mother **Gladys Petkun**
Jonathan Pincus
Dena Robbins
Ada & Alan Rosmarin
Jo Ann Rothschild & Lewis Rosenberg
Abram and Lindsey Sands
Pam & Lakie Shrago- In memory of **Sarah & Erwin Karlsberg**
Steve Siegel
Margie Skeer & Casey Corcoran
David & Rochelle Sugarman- In memory of **Max & Frieda Sugarman, Harry & Rose Gilbert**
Robert Sunshine
Shelley Charnoff & Drew Terrono
Ronit Voigt
Francine Weistrop – In honor of **Koby Ruben**
Matthew & Cheryl Zamaloff
Jen Zaslow & Jim Bruneau

Contributions: Rabbi's Discretionary Fund

Donation from Jill and Robert Vandor
Donation from The Sneider Family
Donation from Gladys Petkun
Donation from Kenneth Pariser
Donation from Michelle Sturdivant in appreciation of **Deborah Ala** and all she does.
Donation from Alan Schultz in memory of his beloved Wife, **Shirley**
Donation from **The Family of Bebe Rosenstein**
Donation from Francine Weistrop wishing **Margo Laschever** and **Jonathan Weistrop** a speedy get well.

Contributions: Sponsor Saturday Morning Shabbat Flowers

In honor of the kindness of all at the Temple
By: The Richardson-Ellement & Family

In honor of **Gladys Petkun** on her birthday
By: Janet Petkun

In honor of our 18th anniversary and George's
Birthday
By: George & Harriet Goldstein

In gratitude for my many blessings.
By: Francine Weistrop

In memory of her Husband **Marvin Gordon**
By: Andrea Gordon

In memory of her Uncle **Sidney Rosenberg**
By: Janet Petkun

In memory of her Mother **Betty Slepikoff**
By: Francie Weistrop

In gratitude to the congregation for all the support
and love that we have received
By: Paul, Maria, Beverly, and Zachary

In Honor of **RabbiB**
By: Barbara Adele Fritz Elliot

In memory of her Parents **Irving and Rachel Felton**
By: Deborah Felton

In memory of her Mother **Mildred Jacobs** and her
Grandmother **Ida Jacobs**
By: Lee Anne Jacobs

In memory of her Dad **William Slepikoff**
By: Francine Weistrop

In memory of her Mom **Ruth Ann Fritz**
By: Barbara Adele Fritz Elliot

In memory of her Parents **Shirley & Dr. Louis Siegel**
By: Carol and Mitchell Macey

In memory of her Aunt/ Uncle **Alice & David Resnick**
By: Barbara Adele Fritz Elliot

In honor of her Family
By: Francine Weistrop

In memory of her Cousin **Maureen (Renie) Fritz**
By: Barbara Adele Fritz Elliot

In gratitude of her hearing!
By: Francine Weistrop

In memory of her Aunt **Shelly Weisman** and the birth
of her Great-nephew, **Hudson Berlin.**
By: Ellen Berlin

In memory of her Brother **Melvin Rosenberg**
By: Gladys Petkun



Contributions: Sponsor an Oneg

To honor the memory of beloved Father
Melvin A. Kaner
By: Ellen Kaner-Bresnick, Paul Kaner , Debbi Kanner
Goldich , Michael Kaner

By: Seli and Merdith Kaya

Contributions

For donations, please give consideration to the following ongoing funds:

RABBI'S DISCRETIONARY FUND

TZEDAKAH FUND

PLANNED LEGACY
\$118.00 minimum

SIM SHALOM PRAYERBOOKS
\$36.00

EIT RATZON
Transliterated Prayer-books.
\$36.00

ETZ HAYIM CHUMASH
\$75 .00

MITZVAH/CHESED FUND
Janet Petkun
617-770-1717

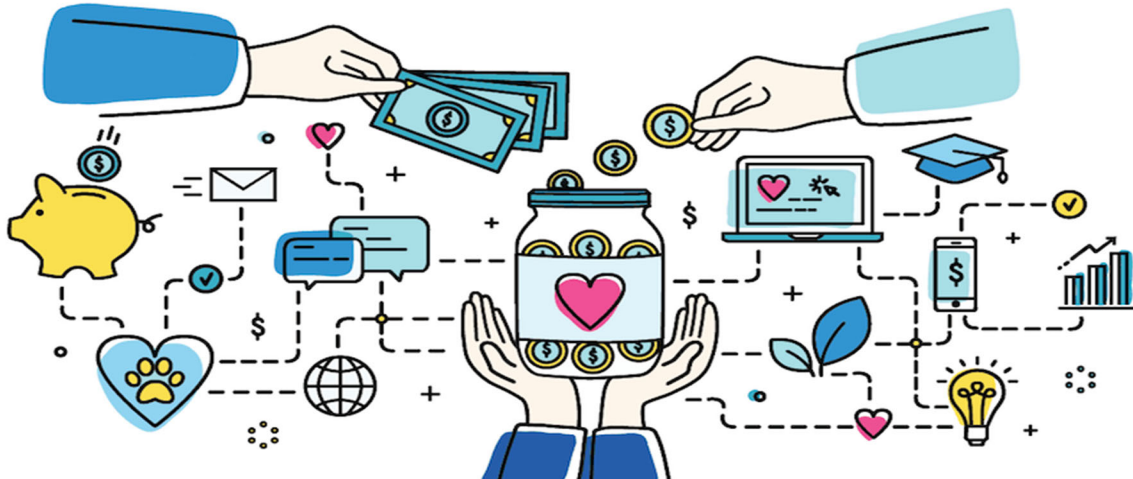
ROSENBAUM FUND
To provide scholarships for Jewish Camps or trips to Israel
Lila Rosenbaum.
617-696-1336

LIBRARY FUND
Books — \$18.00 minimum
Cards — \$5.00
Gladys Petkun
617-479-7465

Congregation Beth Shalom of the Blue Hills has many giving options to serve the temple and community:

- Mishloach Manot: Purim fundraiser to benefit the Religious School.
- The Library Fund: purchases books and other media for our library.
- The Religious School Fund Supports the Religious School.
- The Rosenbaum Fund offers scholarships for Jewish camps and Israel trip
- The Kiddush and Oneg Fund provide refreshments served following Friday night and Shabbat morning services.
- The Bible & Prayer Books Fund purchases new books.
- The Rabbi's Discretionary Fund addresses community needs as determined by the rabbi.
- The Chesed Fund delivers meals for those who have welcomed children or are recovering from illness/surgery.
- Women's Network Fund promotes and supports the welfare of the temple and Religious School.
- Legacy Giving provide opportunities to use planned gifts to provide financial support for a wide range of needs.
- The Temple Endowment supplements dues, tuitions, and payments for religious, educational, cultural, and social activities, programs, and services
- Adas Shalom Endowment: Interest on this fund supports tuition subsidies of \$290 per student, fees for Jewish summer camp and continuing Jewish education
- Commemorate Life-Cycle Events
 - Acknowledge a Yahrzeit, send a condolence card or a congratulation or acknowledgment card with a minimum \$9 donation to the synagogue.
 - Remember family members with a permanent memorial "plaque" in our virtual Legacy Yahrzeit Memorial.

Please support these fundraising opportunities



SCRIP

Our Scrip Fundraising Program is simply buying your gift cards from the synagogue—you get full value of what you order and the synagogue gets a percentage from the vendor.

SIMPLE ISN'T IT?

Please consider buying your gift cards from us. With only a small number of congregants participating, we raise more than \$2,000.00 per year. This is considered a “good fundraiser” but, it be a “GREAT fundraiser” if we had more participation.

We all have to eat (buy Shaw’s, Stop & Shop, or Walmart), we all go to pharmacy (buy Walgreens, CVS), we all need a gift (buy Macy’s, Bed Bath & Beyond, LL Bean) and; we all eat out or take-out (buy Chipolte, Starbucks, Parnera, Dunkin’ Donuts, Olive Garden or 99 Restaurant to name a few).

We know people like their points on their credit cards and we understand that—but would you or could you give up a few of those points and help us make this Fundraiser GREAT?

Call the office 617-698-3394 for more information about the Scrip program.

THE BUTCHERIE OF BROOKLINE

Shop at the Butcherie of Brookline and SEND YOUR RECEIPTS to the office.

The Butcherie pays the shul 5% on Cash Sales Receipts and 2% on Credit Card Sales Receipts.

SPONSOR FLOWERS FOR SERVICES

We all need a little joy these days. How about sponsoring fresh flowers for Shabbat services?

Please call the office at 617-698-3394 or email us at office@bethshalombluehills.org with any questions or to reserve your date.



Congregation Beth Shalom of the Blue Hills

18 Shoolman Way

Milton, MA 02186

Office Telephone # 617-698-3394

office@bethshalombluehills.org

www.BethShalomBlueHills.org

Alfred Benjamin, Rabbi

Paul Cooperstein, President

Steven Ostrovitz, Acting President

Jay Balaban, Interim VP Admin. & Finance

Steve Jacobs, VP Spiritual Life & Ritual Practices,

Deborah Ala, VP Social Action & Com. Outreach

Lisa Sadler, Interim VP of Education

Seli Kaya, Treasurer

Lindsay Rosenfeld, Secretary

Cantor Lisa Kipen-Hershenson, Director of Education

Janet Petkun, & Arlene Klotz, Co-President's Women's Network

Pam Shrago, Editor

Sara Forster, Designer

Arlene Klotz, Office Staff

Candice Privott, Office Staff

Harriet Pollard, Office Staff

